

# Beautifying HBI

Homeward  
Bound



# ANNUAL REPORT

2024





# *Mission*

**PROVIDING INNOVATIVE  
AND LIFE-ENRICHING  
SERVICES TO CHILDREN,  
ADOLESCENTS AND  
ADULTS WITH DISABILITIES**

**COVER PHOTO:  
CHRIST MEMORIAL LUTHERAN CHURCH;  
GOOD NEIGHBORS TO PLYMOUTH HOUSE**



# GREETINGS FROM THE CEO

Dear Friends, Partners,  
and Team Members,

As we reflect on the past year, I'm filled with immense pride and gratitude. Together, we've worked alongside each other, committed to serving individuals with a variety of abilities. This has been a year of growth, renewal, and exciting new beginnings for our organization including the launch of a bold new strategic plan in 2025. Thanks to the unwavering dedication of our team and the incredible support of our community, we closed the year stronger than ever.

At the heart of this progress is a renewed commitment to the health, wellness, and happiness of those we serve. With that in mind, I'm thrilled to highlight four cornerstone initiatives that are already shaping the future of Homeward Bound and the communities we impact:

**BEAUTIFY HBI** reflects our deep commitment to pride of place. From landscaping and public art to cleaner, greener spaces, we're creating environments that inspire joy, dignity, and a deeper sense of connection. A beautiful space uplifts everyone - and we're making that a priority

**RECREATION REBOOT** is our bold step toward revitalizing recreational programs and facilities. By investing in new partnerships, expanding activities, and designing inclusive programming, we're creating more opportunities for individuals of all abilities to move, play, and thrive together.

**EAT WELL-LIVE WELL** brings to life our belief that wellness starts with what we put on our plates. Through nutrition education, better access to healthy foods, and partnerships with local experts, this initiative is empowering both our staff and the individuals we serve to make healthy eating an everyday reality.



**THE HBI LEADERSHIP ACADEMY**, launched in early 2025 with our first-ever off-site, day-long leadership conference, is a powerful new investment in our people. This Academy offers Program Managers, Nurse Case Managers, and emerging leaders a dedicated track for professional development. The curriculum balances core leadership principles aligned with HBI's mission and practical tools for designing, planning, and implementing individualized leadership strategies. Within 12-24 months, participants will graduate with an HBI Leadership Academy Certificate, better prepared for leadership in their daily work -and for future opportunities within our organization.

These initiatives aren't just programs - they're promises. Promises to our residents, our team, and our partners that we're building a future rooted in care, dignity, and continuous growth.

As we step into a new year, we do so with clarity of purpose and the momentum of a year well-spent. Thank you for your belief in our mission and for being part of this extraordinary journey.

The best is yet to come.

With sincere appreciation,  
**Rob Edwards**  
**President & CEO**  
**Homeward Bound**

# Beautifying HBI

**At Homeward Bound, 2024 was a transformative year, and will continue to be into 2025 and beyond...** Plans took shape with a fresh focus on health, wellness, recreation, and connection. HBI is working to continue breaking down barriers and foster a supportive, engaging environment for individuals with disabilities. We are committed to providing innovative and life-enriching services to our residents living in 22 homes across 10 metro area communities integrating connections to community that help make that mission possible.



MnREIA ramp build  
at Jersey



Breck Mix It Up  
group at Althea



MnREIA  
Webster patio door



Church of the Open  
Door NextGen Youth



Bitz Exteriors  
Zealand patio door



# Provide Hands to Help

We were excited to launch the **#BeautifyHBI Campaign in 2024**—a movement powered by community pride, hands-on impact, and a shared commitment to create and maintain beautiful, welcoming homes for the individuals with varied abilities that call Homeward Bound home. BeautifyHBI continues to focus on three ways to get involved: as a Volunteer, an In-Kind Donor, or a Funder.

## HANDS-ON IMPACT: WHY VOLUNTEERS ARE ESSENTIAL

From planting new gardens to brightening up public spaces with fresh coats of paint, volunteering for BeautifyHBI isn't just about quick fixes. Each hour spent is a visible step toward transforming the spaces we share, making an immediate difference that everyone can see and enjoy. Every small commitment builds momentum in creating the vibrant, clean, and lively neighborhood we can all be proud of.



## FLEXIBLE AND IMPACTFUL: EVERY HOUR COUNTS!

No matter your schedule, we have volunteer options that fit your availability. Even an hour here and there makes a difference in the grand vision of a beautiful, welcoming neighborhood. From full-day events to quick morning meet-ups, there's flexibility to volunteer in a way that works best for you. Every small effort combines to create a lasting impact, so whether you have an hour or an afternoon to spare, your time matters.

## BUILD COMMUNITY AND CONNECT WITH NEIGHBORS

The beauty of BeautifyHBI is that it brings people together. Volunteering isn't just a way to help the neighborhood—it's an opportunity to connect with neighbors, make new friends, and strengthen bonds within the community. Whether you're planting trees alongside a local student, sharing cleanup tools with a retiree, or painting with a fellow parent, you're building connections that will last well beyond any single project.

## JOIN US AND MAKE A VISIBLE DIFFERENCE IN THE NEIGHBORHOOD

If you're a local resident—whether a student, retiree, or simply a neighbor with a heart for giving back—this is your chance to get involved! By volunteering, you're creating positive change, meeting new people, and helping make our neighborhood shine.





# Available **#BeautifyHBI** Volunteer Projects

## **INTERIOR & EXTERIOR PAINTING**

Refreshing and revitalizing spaces with new coats of paint inside and out.

## **PAVEMENT & ASPHALT REPAIRS**

Fixing sidewalks, driveways, and other paved areas for safety and aesthetic appeal.

## **PATIO DOOR INSTALLATION**

Enhancing outdoor access and adding value with new or updated patio doors.

## **BATHROOM RENOVATIONS**

Upgrading bathrooms to improve functionality and comfort.

## **LANDSCAPING & GARDENING**

Transforming outdoor spaces through planting, mulching, and seasonal prep.

## **TREE & BRANCH REMOVAL**

Clearing hazardous or overgrown branches and maintaining trees.

## **LEAF RAKING & YARD CLEAN-UP**

Seasonal tasks to keep outdoor spaces tidy and inviting.

## **GARDEN BED PREPARATION**

Prepping flower or vegetable beds for spring planting.

## **MULCHING & WEED REMOVAL**

Maintaining/Clean out of garden beds with mulch and removing weeds to promote growth.

## **GUTTER CLEANING**

Clearing gutters to ensure proper water drainage and prevent damage.

## **RAMP REBUILDS & RENOVATIONS**

Constructing or improving ramps for accessibility and safety.

## **CARPENTRY PROJECTS**

Tackling a range of small construction tasks to repair or enhance spaces.



# Eat Well Live Well

At HBI, we ask ourselves every day, how we can better support people with varied abilities to get the most out of their lives. How can we assist them in moving ahead; how we can challenge ourselves as staff to be creative and innovative in the services we provide?

## ONE WAY TO BETTER SUPPORT THOSE WE SERVE, IS THROUGH OUR FOCUS ON FOOD!

HBI partnered with Launch my Health to conduct a full review and update of our house menus to ensure that our meals are not only nutritious, but also aligned with the specific dietary needs of our residents. This review allowed us to provide meals that support both physical and mental health, and that reflect the latest in nutritional science. Spearheading this was our Director of Nursing Lisa Fredericksen and implementing is our Director of Program & Operations Kristi Nordland.



Chili Cook Off winners - New Hope Lions TX Grown

# Eat Well Live Well

## EW-LW GOALS FOR 2025:

The Eat Well-Live Well initiative is one of our primary focuses in 2025, aimed at promoting health and wellness through nutritious eating and education. This initiative will feature several exciting components that focus on an eat well-live well connection.



**FOOD AS MEDICINE:** A key aspect of Eat Well-Live Well will be the emphasis on “food as medicine.” We’ll be training staff on the powerful role food can play in healing, preventing illness, and enhancing well-being for residents. By understanding the therapeutic value of food, we can better support our residents’ health and create meals that truly nourish their bodies and minds. We will record the qualities and types of foods eaten in the resident record and monitor the health benefits derived.

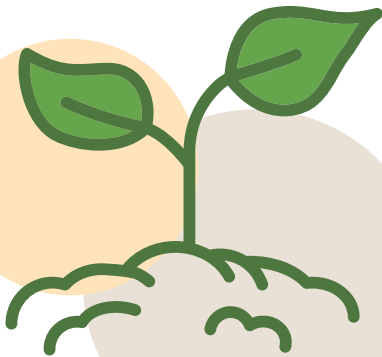
**FAMILY STYLE DINING:** At Homeward Bound, we bring residents together for meal time and invite staff to eat alongside them using the formality of family-style dining. This deepens the feeling of home we provide for the individuals we serve. Whether an individual eats only a small portion or through a tube, participation around the table creates a family-like community for all involved.





# Eat Well Live Well

**THE HBI COOKBOOK:** A compilation of easy-to-make, nutritious recipes, the HBI Cookbook will be a great resource for staff and residents alike. It will showcase meals that cater to dietary preferences and nutritional needs, encourage creativity in the kitchen, and draw on old family recipes from residents, their families, and staff.



## **THE HBI COMMUNITY GARDEN AND RAISED GARDEN/HERB BEDS:**

A hands-on project where residents will have the opportunity to grow their own vegetables and herbs. This not only supports a healthy diet but also provides a sense of accomplishment and connection to the food they prepare and consume. This initiative will also connect us with movement and recreation and attract the collaboration of community volunteers, sharing the joy and benefits that visiting a garden can bring for both residents and staff.

**COOKING EDUCATION:** Food preparation, procurement, cultivation, and integration through planning and education will help staff incorporate the link between food knowledge and food prep.



# Recreation Reboot

Our newest program **HBI Recreation Reboot** aims to actively immerse the wonderful individuals we serve in their communities through the power and experience of recreation. People with disabilities often have limited access to recreation unless intentioned efforts make recreation a priority and a central focus for ensuring the best life has to offer. It is our belief and goal that individuals with disabilities should never be limited in their access to immersive recreation experiences. Since the beginning, Homeward Bound has been driven to provide an inclusive life for those we serve however, we want to reboot our intentional focus on recreation and honor the limitless potential of individuals to experience no boundaries in what life can include for them. **HBI Recreation Reboot** strives to foster all types of partnerships in and with the community, creating limitless possibilities!



Next Gen at Bluebird



DeLaSalle at Lee

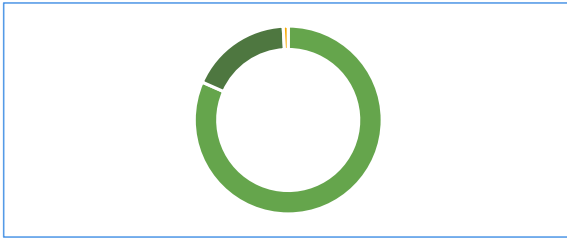


DeLaSalle at Webster





## For the Year Ended December 31, 2024



### How we Used Our Resources:

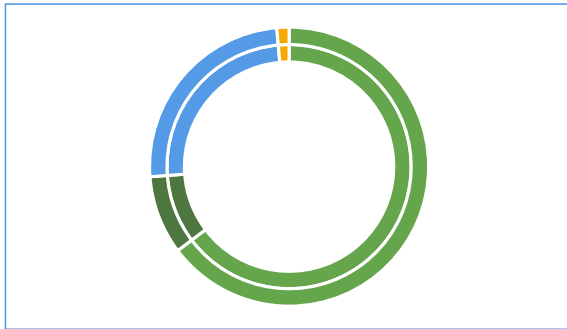
**20,178,972**

Total Expenses

Program Services 82%

Management 18%

Development 1%



### Resource provided by program:

**20,464,080**

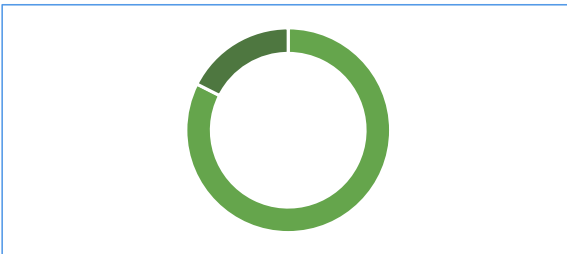
Total Agency Revenue

Developmental Disability 65%

Intermediate Care Facility 9%

Community Alternative Care 25%

Other / Development 1%



### Donations - includes capitalized In-kind and special events

**243,529**

Total Contributions

Cash 82%

In-Kind 18%

## Financial Health

### ASSETS

Current Assets	4,800,272
Property and Equipment	8,163,607
Other assets	421,375
<b>Total Assets</b>	<b>13,385,254</b>

### LIABILITIES & NET ASSETS

Current Liabilities	1,793,548
Long-Term Debt	4,838,432
Net Assets	6,753,274
<b>Total Liabilities &amp; Net Assets</b>	<b>13,385,254</b>

## Cash Gifts

### \$10,000+

The Cheney Family Trust  
Geritom Medical, Inc.  
Wolfgang Greiner  
Patrick Hurley  
Otto Bremer Trust  
Plymouth Lions Club  
Terry and Christine Severns-Williams  
The Patch Foundation

### \$5,000-\$9,999

John and Michele Abbott  
Frank and Kathy Anderson  
Christensen Group Insurance  
Irish Eyes Are Smiling, AEF  
The Nelson Family  
Messerli & Kramer P.A. Attorneys at Law

### \$2,500-\$4,999

Bremer Bank  
Paul Chermak  
Dan Etzel  
Fraser Morris Electric  
Holmes Murphy  
Metro Sales  
Philadelphia Insurance Companies  
Plastics International  
Regency Hospital  
Tensho Takemori  
Whizkids Tech, LLC

### \$1,000-\$2,499

Bitz Exteriors  
Amy Bot-Lamker  
Boyer Building Corporation  
BroadStreet Publishing Group  
Ronald Carlson  
Kerry Colpitts  
Graff, Ltd.  
Anna and Sven Gustafson  
Handi Medical Supply  
David Hofstad  
Thomas and Vicki Hurwitz  
King Solutions  
Knights of Columbus Bloomington  
Marian #3827  
Knights of Columbus Osseo #9139  
Barbara and Ted Kozmik  
Kraus-Anderson  
Donald Larson  
Littler Mendelson Foundation  
Douglas Lawrence  
Medtronic, Inc.  
Morgan Stanley, QDC  
Marko and Robann Otto-Mrkonich  
Peggy Neale and Ryne DeVries  
Andrea Nelson

### NMC Exteriors Now Partnered

with Apple Roofing  
Plehal Blacktopping  
Don Priebe  
Allison Resnick  
RGA Reinsurance Co.  
Julie Rohr  
Kevin and Jennifer Rymanowski  
David and Sharon Stendal  
Allen Thomas  
Ronald and Stef Tresco  
TSE, Inc.  
UHL Co., Inc.  
WA Group  
Anonymous

### \$500-\$999

Ameriprise Financial  
Mark Bot and Laurel Kinsey  
Mary Bot  
Carmen Colombo  
Delta Dental of Minnesota  
Wade Dugstad  
Fidelity Charitable  
Alex Greene  
Jordan Hagel  
Charles and Jacie Hurd  
Knights of Columbus  
Brooklyn Center #6772  
Knights of Columbus Crystal #3656  
Douglas Lawrence  
Charles Lochner  
Mary Jo Luzius  
Jack McClure  
Earl and Shirley Mellema  
Mike & Linda Fiterman Family Foundation  
Jenifer and Todd Miller  
Susie and Rich Mirman  
Richard and Cindy Morris  
Patricia Mullen  
Rebecca Perra  
Prairie Island Tribal Council  
Jim Shaefer  
Securian Financial  
Ryan Sherwood  
Stake Club Charitable Foundation  
Allen and Mary Thomas  
Twin City Area Chapter CFMA  
Universal Promotions, Inc.  
Voya Financial  
Willis Towers Watson  
Mary and Dan Ystesund

### \$100-\$499

Abbott Landscaping  
Keith and Patricia Anderson  
Richard and Janis Anderson  
Anonymous  
Jon Bauman  
Ann and Jim Beck  
Eugene Berger

W.M.R and Tara Bergerson  
Jim Bergeson  
Karen Berkner  
Jim and Stephanie Besonen  
Bob and Carl's Auto Body  
Boyer & Associates  
Mind Burkhart  
Bob Byrnes  
Todd Carlock  
Paul Carter  
Joel C. Claus  
Alison N. Decker  
Leza and Terry Decker  
Sheryl Denker  
Dianna and Paul Denman  
Effie and John Deno  
Steve Eckes  
Rob Edwards  
Deniser Feiner  
Joseph Finley  
Jim and Cindy Fisher  
FM Global  
Lisa Fredericksen  
Kent and Gretchen Fuller  
Thomas and Kathleen Gardner  
Sandra Gustafson  
The Hanover Insurance Group  
Joel Hicks  
Julie and Kevin Hirman  
Gail and Gerald Hoffmann  
Fran Iverson  
John and Barb Kaminski  
Lori Kaminski  
Suzanne Kaminski  
Gail Katz  
Knights of Columbus Maple  
Grove#13359  
Knights of Columbus Rogers #11941  
Helen Koland  
Stephen and Brenda Lanak  
Scott Larsen  
Ruth Larsson  
Dave and Amy Lyons  
Sam MacDonald  
Beverly and Gary MacLennan  
Erin Mahoney  
Ryan Mahoney  
Victoria and Thomas Mahoney  
Cameron McConnell and  
Timothy Hanson  
Nora McGuire  
Jill Merriam  
Lori and Bill Merriam  
Kathy Metcalf  
Kurt Merkle  
Michele Miller  
Christi Monson  
Suzanne Mosley  
Debra and Sandra Nahl  
Jeff and Becky Nelson  
New Hope Lions  
Kristi Nordland  
Chelsey Nordstrom

Joanne and Dan Nordstrom  
Rich Peltier  
Jarrod and Linda Peterson  
Matt Reilly  
Kevin Ritz  
Kathleen Rock  
Joan Rothfuss and Paul Shambroom  
Catherine Sable  
Saint Paul & Minnesota Foundation  
Sharon Sayles-Belton  
Scates Real Estate  
Stephanie Schmitt and Christian Stoner  
W. D. Shambroom  
Lisa Skrede  
Nancy Smith  
Peggy and Lawrence Smith  
Paula Snell  
Ruth and Robert Stone  
Kristie Tabler  
TKA Health  
Don and Judy Uutala  
Kristen Uutala  
Leon Van Der Pol  
Todd Vaske  
Augusta Weide  
Joel and Aura Wharton-Beck  
Alison Williams  
Frances Williams  
Warren and Lynette Kopperud  
Paul and Nancy Zander

### Under \$100

Madison Anderson  
Teresa Anderson  
Bonnie Arnold  
Candace and Steven Bauer  
Susan Beck  
Travis Beck  
Chris Becker  
Kenneth Bence  
Barb Billet  
Joel Bludorn  
Theresa Bluhm  
Adam Buzay and Beth Travers-Buzay  
Karen Casalenda  
Sandra and Frank Commers  
Jack Costaglio  
Linda Danielson and Daniel Bahl  
Mary K. Daugaard  
Judith Deloy  
Jean Denisson  
Teresa Dufour  
Dori Dufresne  
Barbara and Daniel Edwards  
Barb Ek-Froehle  
Serena Emerfohl  
Cory Erickson  
Jane Erickson  
Gay and Steve Eyeraman  
Norman Fassler-Katz  
Shannon Friberg  
General Mills



Angela and Will Gibson  
 Mona Gordon  
 Cheryl Haggerty  
 Kerry Handley  
 William Handley  
 Marie Handy  
 Donna Hechsel  
 Marie Hechsel  
 Mary Hoppe  
 Meena Johnson  
 Andrew Kuderer  
 Wayne Larson  
 Kent U. Larsson  
 Kristin Lee  
 Cindy Lindmyer  
 Chris Luger  
 Josh McCullick  
 Kurt Merkle  
 Jerry Mlekoday  
 BK Nahl  
 Gertrude Nahl  
 Gunner Nahl  
 Gus Nahl  
 Tony Nahl  
 John Ngaima  
 Cindy and Rondald Olson  
 Mary E. Orff  
 Wendy Pedersen  
 Kaila Peel  
 Ryan Prellwitz  
 Nancy Radow  
 Matt Reilly  
 Diane J. Rimer  
 Sharon Ruprecht  
 Team Mahoney/ Sam W.  
 Janet Savage  
 Mary G. Schluck  
 Julie Schmidt  
 Mike Scholl  
 Joan and David Schultheis  
 Becky Stras  
 Zander Tabler  
 Team Mahoney/ Sue  
 Team Mahoney/ Tray T.  
 Theresa Travers  
 Maris Trejo  
 Amy Vennewitz  
 Linda Voss  
 Jay and Shawn Weide  
 Peter Will  
 Mark Zubert

### In-kind Gifts

#### \$10,000+

Bitz Exteriors  
 (MnREIA) Minnesota Real Estate  
 Investors Association  
 Jan and Dick Moser

#### \$1000-9,999

LRS  
 Mike Pfeiffer  
 Wendy Pedersen

#### \$100-\$999

Dun Rite Concrete  
 Christ Memorial Lutheran Church  
 Crosswinds UMN  
 Heartland America  
 L&L Exhibition Management, Inc.  
 Jon Morphew  
 Plehal Blacktopping

#### Under \$100

Patterson Dental  
 Rise and Shine Garage Doors

### 2024 Golf Classic Golf Sponsors

**Premier Sponsor**  
 Geritom Medical, Inc..

**Banquet Sponsor**  
 Christensen Group

**Putting Green Sponsor**  
 The Nelson Family

**Raffle Sponsor**  
 Messerli & Kramer P.A Attorneys at Law

**Luncheon Sponsor**  
 Rice Real Estate

**Silent Auction Sponsor**  
 Plastics International

**Driving Range Sponsor**  
 Metro Sales

**Par 3 Sponsors**  
 Bremer Bank  
 Chermak Consulting Co.  
 Holmes Murphy  
 Philadelphia Insurance Co.  
 Whizkids Tech, LLC.

### Team and Hole Sponsors

Jim Bergeson  
 Bitz Exteriors  
 BroadStreet Publishing Group  
 Ron Carlson  
 Fraser Morris Electric  
 Kraus-Anderson  
 Don Priebe  
 Regency Hospital  
 RGA Reinsurance/ Patrick Hurley  
 Uhl Co.  
 WA Group

### Individual Sponsors

Cummings Mobility Conversions  
 & Supply  
 Delta Dental of Minnesota  
 Handi Medical Supply  
 TKA Health/ Kevin Kresja  
 Rob Edwards  
 Ryan Sherwood  
 Scates Real Estate/ Brian Scates

### Hole Sign & Dinner Sponsors

Lisa Fredericksen  
 Thomas and Kathy Gardner  
 Brian and Kathy Kuphal  
 Stephen J. Lanak  
 Kristi Nordland  
 Prairie Island Tribal Council  
 Twin City Area Chapter of CFMA  
 Willis Towers Watson

### Cash Sponsors

Alexis Bailly Vineyard  
 Abbott Landscaping  
 Bill Operations, LLC.  
 Boyer & Associates  
 The Etzel Family Foundation  
 Patrick Hurley  
 Littler Mendelson Foundation  
 Bob Morgan  
 Peggy Neale  
 RGA Reinsurance Co.  
 Wayne and Ann Rice  
 Rice Real Estate Company  
 The Stake Club Charitable Fund  
 Securian Financial  
 US Bank  
 Dan and Mary Ystesund

### 2024 Golf In-kind

AC Hotel Minneapolis Downtown  
 Agile Media  
 Allegra Print & Imaging  
 Sandra Amyotte  
 Barkers Island Inn  
 Sandy Becker  
 Jim Bergeson

Julie Bergstorm  
 Josh and Danielle Bitz  
 Bluefin Bay Family of Resorts  
 Theresa Bluhm  
 Brooklyn Center Lionness Club  
 Brooklyn Park Liquor Barrel  
 Bob Brynes  
 Steve Cheney  
 Paul Chermak  
 Jester Concepts  
 Continental Diamond  
 Dale Studios  
 Amanda Del Vecchio  
 Drew's Concessions  
 Emery, Autograph Collection Hotel  
 Jim and Cindy Fisher  
 Fortune Bay  
 Craig Gardner  
 Thomas and Kathy Gardner  
 Geritom Medical  
 Jordan Hagel  
 Tom Hillstead  
 Randy and Melissa Hoepner  
 Patrick Hurley  
 International Dairy Queen  
 Inver Woof Golf Course  
 Jarrod Peterson Real Estate Group,  
 Edina Realty  
 Alise Jarvis  
 Kwik Trip  
 Ron Katz & Family  
 Lafayette Club  
 Lakes Wine & Cheese  
 Laura McDonald  
 Lettuce Entertain You Restaurants  
 Lori and Bill Merriam  
 Mall of America  
 Mike Pfeiffer  
 Minnesota Wild  
 Kristine Morin  
 Paul Chermak  
 Jan and Dick Moser  
 Number 12 Cider  
 Pack Family Entertainment, LLC.  
 Park Tavern  
 PoppedCorn, LLC.  
 Kathy Raph  
 Richard and Cindy Morris  
 Ryan Sherwood  
 Saint Paul College, School of Carpentry  
 Jim Shaefer  
 Science Museum of Minnesota  
 Thirty-One Gifts by Deb  
 Three Rivers Park District  
 Total Wine & More  
 Total Wine & More - Minnetonka  
 Twin City Heating and Air + Electric  
 Todd Vaske  
 Jeff Weyenburg  
 Ben Whiteis  
 Mary and Dan Ystesund

2024

*Donors*

## 2024 Made in the Shade Event

### Walkers, Runners, Rollers, and Donors

Andrea Nelson & Family  
Angela and Will Gibson  
Ann Beck  
Anonymous  
Aspen Waste Systems  
Augustin Jappah  
Bark Billet  
Barbara Kozmik  
Barb Ek-Froehle  
Becky Stras  
Adam Buzay and Beth Travers-Buzay  
Bitz Exteriors  
BK Nahl  
Bonnie Arnold  
Breadsmith  
Candace and Steven Bauer  
Cheryl Haggerty  
Cindy Lindemyer  
Co-op Partneres Warehouse  
Daniel ThomasDebra and Sandra Nahl  
Diana Howe  
Diane J. Rimer  
Dennis and Kathryn McGuire  
Donna Hecshel  
Edwin Duokie  
Erin Mahoney  
Eugene Berger  
Eve Dixon  
Fidelity Charitable  
Gail Hoffmann  
Gertrude Nahl  
Gunner Nahl  
Gus Nahl  
Homeward Bound, Inc.  
Jacqueline Owen  
Janet Savage  
Jean Denisson  
Jim and Stephanie Besonen  
Joan Rothfuss  
Joel Bludorn  
John and Barbara Kaminski  
John Ngaima  
John Thao  
Joseph Finley  
Josiah Wesseh  
Judith Deloy  
Julie Schmidt  
Kadijat Kolawole-Ayoub  
Kamisha Davis  
Karen Casalenda  
Kathleen Rock  
Keith and Patricia Anderson  
Kennedia David  
Kerry Handley  
Kristin Lee  
Kristine Morin

Kwik Trip  
Leon Van Der Pol  
Leona Nebo  
Linda Danielson  
Linda Voss  
Lori Kaminski  
Maddi Anderson  
Maria Trejo  
Marie Handt  
Marie Hechsell  
Mary E. Orff  
Mary Schluck  
Mary Hoppe  
Mary Jo Luzius  
Mary and Dan Ystesund  
Meena Johnson  
Mona Gordon  
Musenga Wilonja  
Nancy Radow  
Nicole Lester & Family  
Nora McGuire  
One Wheel Marketing  
Patricia Nahl  
Paul and Nancy Zander  
Paula Snell  
Plymouth Lions Club  
Rebecca Perra  
Renee Gritz  
Richard and Janis Anderson  
Righter-Shambroom Fund  
Rob Edwards  
Ronald and Stef Tresco  
Rosaline Wilson  
Ruth Stone  
Ryan Mahoney  
Sandy Nahl  
Shambroom Savastio Charitable Fund  
Shannon Friberg  
Sharon Ruprecht  
Sharron M. Nahl  
Spell Family Foundation  
Susan Beck  
Suzanne Mosley  
Team Mahoney/ Sam W.  
Team Mahoney/ Tray T.  
Terrina White  
Terry and Christine Severns-Williams  
Theresa Anderson  
Tony Nahl  
Universal Promotions, Inc.  
Victor Collins  
Victoria and Thomas Mahoney  
W.D Shambroom  
William Handley  
Wycklif Ogoti

## Homeward Bound would like to acknowledge memorial gifts given in 2024

### In memory of Roger Anderson

Frank Anderson  
Don and Judy Uutala

### In memory of Amanda Ashley

Ruth Larsson  
Kent U. Larsson

### In memory of Daniel Bot

Mark Bot and Laurel Kinsey  
Mary Bot  
Amy Bot-Lamker and Derrin Lamker  
Jennifer and Todd Miller

### In memory of Jackie Carlock

Todd Carlock

### In memory of Robert Deno

Effie Deno

### In memory of Daniel Hurley

Lisa Skrede

### In memory of Brenda Johnson

Sandra Gustafson

### In memory of Becky & Carolyn Larson

Wayne Larson

### In memory of Matthew McGuire

W. M. R. Bergerson  
Nora McGuire  
Dennis McGuire

### In memory of Scott Mellema

Earl and Shirley Mellema

### In memory of Kimberly Metcalf

Kathy Metcalf

### In memory of Marty Naiditch

Susie and Rich Mirman

### In memory of Dustin Smith

Nancy Smith

### In memory of the Edward and David Stanke

Mary K. Daugaard

### In memory of Jamie Stendal

David Stendal

### In memory of Lisa Sumstad

Wendy Pedersen  
Joan Schultheis  
Mary Bot

### In memory of Rima Takemori

Tensho Takemori

## Homeward Bound would like to acknowledge gifts given in honor, celebration, or recovery of in 2024

### In honor of Laurie Bot

Kent and Gretchen Fuller  
Stephanie Schmitt

In honor of Taylor Gander  
Jane Erickson

### In honor of Lori Kaminski

John and Barbara Kaminski

### In honor of Erik Lindman

Linda Voss

### In honor of Chelsey Nordstrom

Joanne Nordstrom

### In honor of Allison Resnick

Julie Rohr

### In honor of Kilayna Sayles-Belton

Patricia Mullen

### In honor of Brittany M. Williams

Frances Williams

### In honor of Matthew Zander

Catherine Sable

## Homeward Bound would like to acknowledge memorial, honor, celebration, or recovery of gifts to the David Katz Memorial (Education) Fund in 2024

### In memory of Roberta Denker

Sheryl Denker

### In memory of Tom Franssen

Sheryl Denker

### In memory of David Katz

Gail Katz

### In honor of Ron Katz

Norman Fassler-Katz

2024

*Donors*

## 2024 Homeward Bound, Inc. Board of Directors

### Board Chair

Ryan Sherwood  
Highland Capital Brokerage/Osaic

### Board Vice Chair

Kevin Rymanowski  
Benedictine Health Systems

### Treasurer

Paul Chermak  
Chermak Consulting

### Secretary

Terry Severns-Williams  
Samsung Electronics, Retired

### Directors

Wolfgang Greiner  
Greiner Construction, Retired

Jan Moser  
Fraser, Inc., Retired

Andrea Nelson  
Spell Capital Partners, LLC

Mary Ystesund  
AFL-CIO, MRLF, Retired

Patrick Hurley  
RGA Reinsurance Company

Jim Schaefer  
MSP Mortgage

## 2024 Homeward Bound Foundation Board of Directors

### Board Chair

Jim Bergeson  
BI Worldwide

### Board Vice Chair

Richard Morris  
Fraser Morris Electric

### Board Secretary/Treasurer

Jill Ties  
US Bank

### Directors

Peggy S. Neale  
Securian Financial

### Dan Etzel

Holmes Murphy

## Homeward Bound, Inc. Senior Management

### President & CEO

Rob Edwards

### Director of Property and Finance

Theresa Bluhm

### Director of Human Resources

Serena Emerfoll

### Director of Development

Kristine Morin

### Directors of Program and Operations

Kristi Nordland

### Director of Nursing

Lisa Frederickson

## Homeward Bound, Inc. Long Term Staff as of 12/31/2024

### More than 40 years

Suzanne Teska Nov 1975  
Beth Pedersen Oct 1976  
Robert Ahonen August 1980  
Kevin Smith March 1984

### More than 30 years

Kristi Nordland June 1990  
Kathleen Livingston March 1991  
Scott Noland June 1992  
Christopher Dunleavy Sep 1993

### More than 20 years

Samuel Ozanger Feb 1997  
Jennifer Adamson May 1997  
Shawanda Williams Aug 1997  
Leona Nebo Jan 1998  
Joseph Blamo Mar 1998  
Otterlee Collins Mar 1998  
Aaron Briggs July 1999  
Musu Massey Mar 2000  
Rosaline Wilson Apr 2000  
Louisa Nimene July 2000  
James David Aug 2001  
Gertrude Flomo Oct 2001  
Kebeh Tarr July 2002  
Tabitha Ejimadu July 2002  
Julia Faraone Sep 2002  
Charles Johnston Dec 2002  
Jessica Case Feb 2003  
Josiah Wesseh Sep 2004

### More than 10 years

Delsa Cintron Piazza Oct 2005  
Sandra Glover Jun 2007  
Patricia Hardin Jun 2008  
Victor Collins Jan 2009  
Tammy Larsen Feb 2009  
Mary Omwega Feb 2009  
Kristine Morin Mar 2009  
Mary Beyan Jan 2011  
Jenet Kawala Set 2011  
Clara Phillips Nov 2011  
Rebecca Otara April 2012  
Angela Addae July 2013  
Latifat Adekoya Aug 2013  
Joash Nyangacha Sep 2013  
Baratune Otuyelu Jan 2014  
Teah Geleplay Feb 2014  
Alphonzina Mbaka Sep 2014

We apologize for any names that were omitted or misspelled. Please contact the Development Office at 763-746-4822 or [twhite@hbimn.org](mailto:twhite@hbimn.org) so we may make the correction for the following year.

If you no longer wish to receive this mailing, please contact the Development Office at 763-746-4822 or [twhite@hbimn.org](mailto:twhite@hbimn.org).





12805 Highway 55, Suite 400  
Plymouth, MN 55441

[www.hbimn.org](http://www.hbimn.org)  
(763) 525-3186

NONPROFIT  
US POSTAGE PAID  
TWIN CITIES MN  
PERMIT NO. 92420



Mission

PROVIDING INNOVATIVE  
AND LIFE-ENRICHING  
SERVICES TO CHILDREN,  
ADOLESCENTS AND  
ADULTS WITH DISABILITIES

Scan the QR code with  
your smartphone to  
make a donation online!

